

The background features a dark blue gradient with a subtle pattern of white stars. Overlaid on the left side are several technical diagrams in a lighter blue color. These include circular gauges with numerical scales (e.g., 150, 160, 170, 180, 190, 200, 210, 220, 230, 240, 250, 260), concentric circles, and curved arrows indicating motion or flow. The overall aesthetic is clean, modern, and technical.

# DIE MODE

# WAS TRÄGT SIE?



# WAS TRAGEN SIE?



# WAS TRÄGT SIE?



**WAS TRÄGT SIE?  
WER IST SIE?**



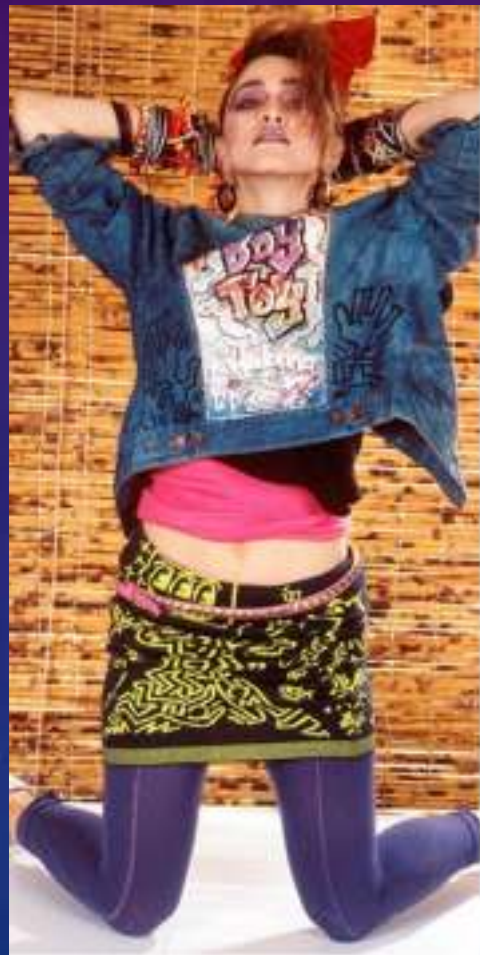
**WAS TRAGEN SIE?**



# WAS TRAGEN SIE?



# WAS TRÄGT SIE? WER IST SIE?

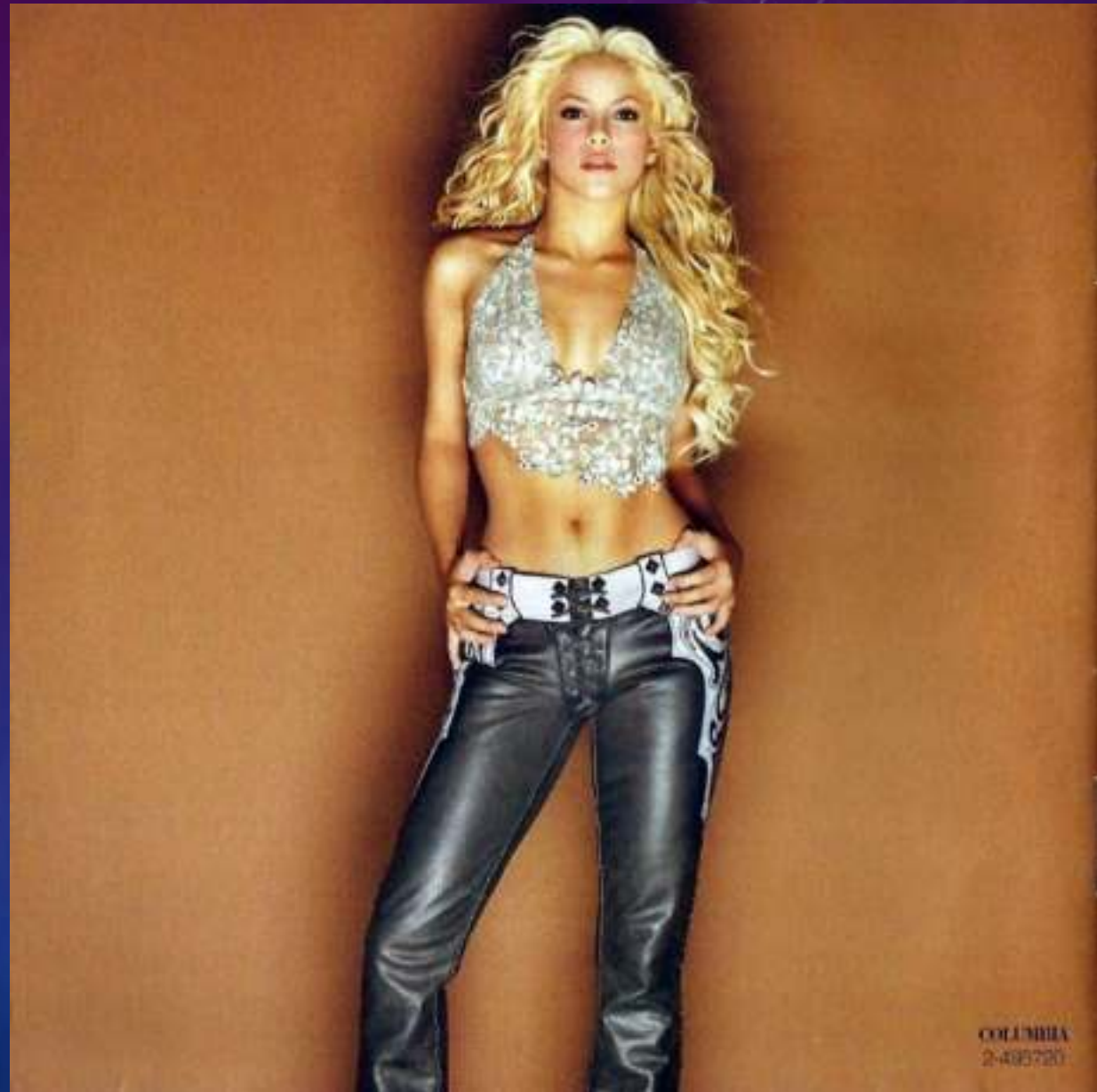




# WAS TRÄGT SIE? WER IST DAS?



**WAS TRÄGT SIE?  
WER IST DAS?**



**WAS TRÄGT SIE?  
WER IST DAS?**



The background is a gradient from dark purple at the top to dark blue at the bottom. It features faint, stylized gear patterns and a starry sky effect. The text is centered and reads:

**UND DU...?**  
**WAS TRÄGST DU HEUTE?**